

# Published Application Idle Service Setup

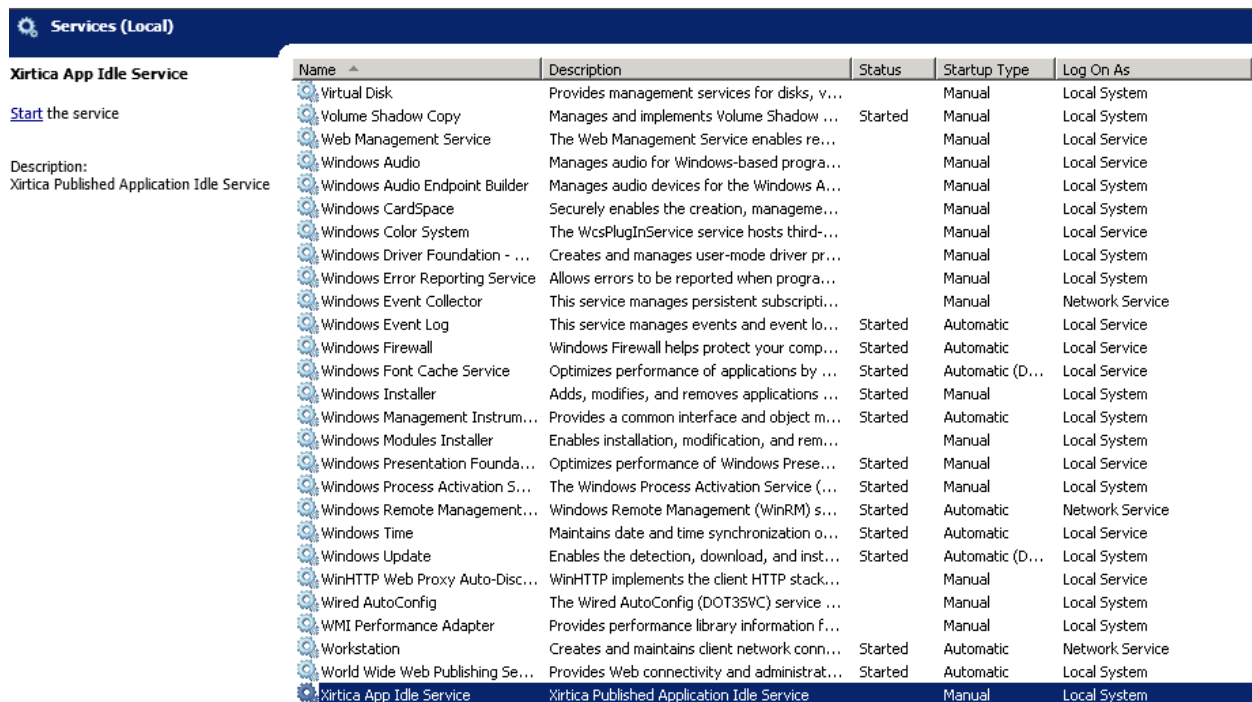
Setup Instructions for XenApp 7.x

## Overview

This application is designed to run on a site/farm XenDesktop/XenApp broker server instance. The installer registers a new service (“AppIdleService”) on the broker as well as an administrative console for configuring session thresholds and optional warning messages for individual published applications.

## Service Configuration

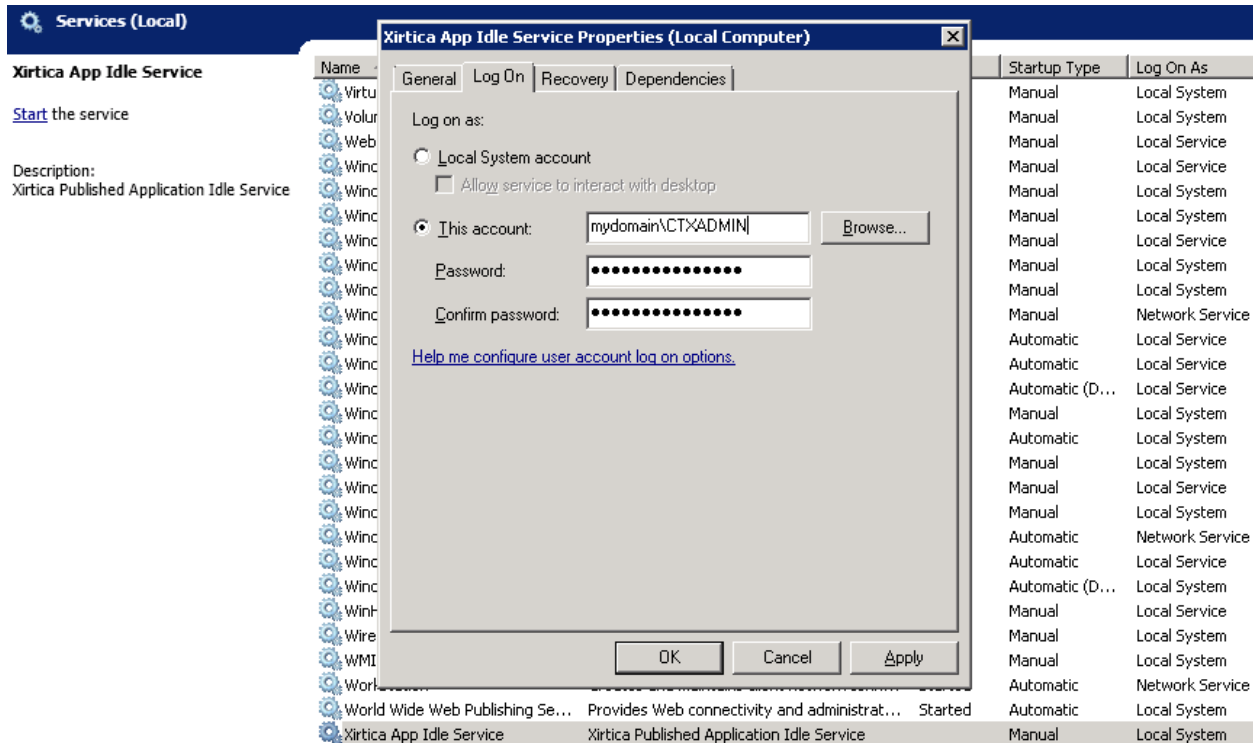
After the installation utility has run the “Xirtica App Idle Service” will appear in the services applet. The service defaults to run in the context of the local system and is set to manual start as below -



The screenshot shows the Windows Services console for the local system. The 'Xirtica App Idle Service' is highlighted in blue. The service is set to 'Manual' startup type and runs as 'Local System'. The description is 'Xirtica Published Application Idle Service'.

Name	Description	Status	Startup Type	Log On As
<b>Xirtica App Idle Service</b>				
Virtual Disk	Provides management services for disks, v...		Manual	Local System
Volume Shadow Copy	Manages and implements Volume Shadow ...	Started	Manual	Local System
Web Management Service	The Web Management Service enables re...		Manual	Local Service
Windows Audio	Manages audio for Windows-based progra...		Manual	Local Service
Windows Audio Endpoint Builder	Manages audio devices for the Windows A...		Manual	Local System
Windows CardSpace	Securely enables the creation, managem...		Manual	Local System
Windows Color System	The WcsPlugInService service hosts third...		Manual	Local Service
Windows Driver Foundation - ...	Creates and manages user-mode driver pr...		Manual	Local System
Windows Error Reporting Service	Allows errors to be reported when progra...		Manual	Local System
Windows Event Collector	This service manages persistent subscrip...		Manual	Network Service
Windows Event Log	This service manages events and event lo...	Started	Automatic	Local Service
Windows Firewall	Windows Firewall helps protect your comp...	Started	Automatic	Local Service
Windows Font Cache Service	Optimizes performance of applications by ...	Started	Automatic (D...	Local Service
Windows Installer	Adds, modifies, and removes applications ...	Started	Manual	Local System
Windows Management Instrum...	Provides a common interface and object m...	Started	Automatic	Local System
Windows Modules Installer	Enables installation, modification, and rem...		Manual	Local System
Windows Presentation Founda...	Optimizes performance of Windows Prese...	Started	Manual	Local Service
Windows Process Activation S...	The Windows Process Activation Service (...	Started	Manual	Local System
Windows Remote Management...	Windows Remote Management (WinRM) s...	Started	Automatic	Network Service
Windows Time	Maintains date and time synchronization o...	Started	Automatic	Local Service
Windows Update	Enables the detection, download, and inst...	Started	Automatic (D...	Local System
WinHTTP Web Proxy Auto-Disc...	WinHTTP implements the client HTTP stack...		Manual	Local Service
Wired AutoConfig	The Wired AutoConfig (DOT35VC) service ...		Manual	Local System
WMI Performance Adapter	Provides performance library information f...		Manual	Local System
Workstation	Creates and maintains client network conn...	Started	Automatic	Network Service
World Wide Web Publishing Se...	Provides Web connectivity and administrat...	Started	Automatic	Local System
Xirtica App Idle Service	Xirtica Published Application Idle Service		Manual	Local System

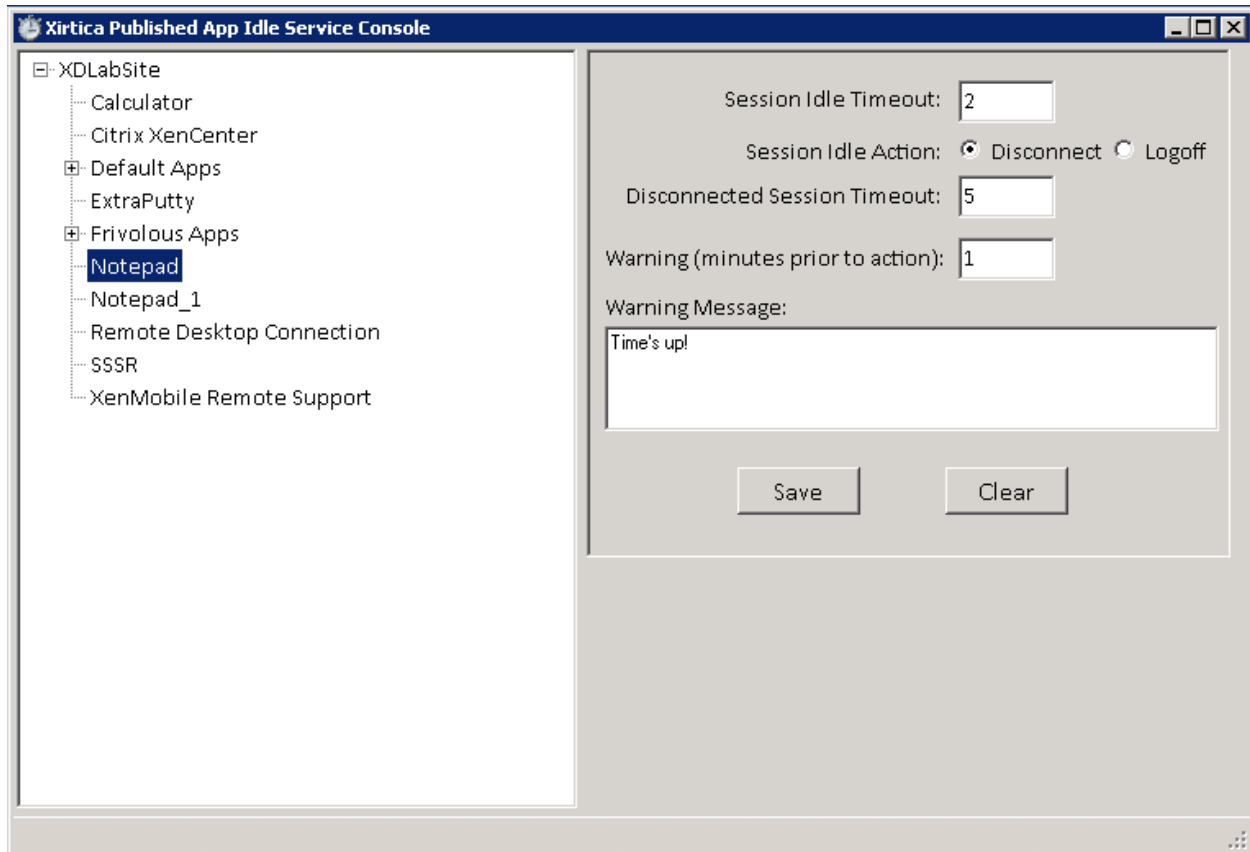
Prior to starting the service the logon context needs to be set to a valid XenDesktop/XenApp farm/site administrator account by changing the properties of the service as below –



Once a valid account context has been established the service startup type can optionally be set to the desired behavior and the service can be launched.

## Application Configuration

An administrative console is installed to the target directory shared with the service (e.g. C:\Program Files (x86)\Xirtica Software\App Idle Service\AppIdleConsole.exe) and a start menu shortcut to the console is created. **NOTE:** be sure to run the administrative console as administrator. At launch the console retrieves all the enabled published apps from all the Delivery Groups defined by the controller site –



Individual published app session idle and disconnect timeouts can be set here. All timeouts are in minutes and a zero value represents a disabled timeout. The timeout settings operate independently and it is not necessary to specify both an idle and disconnect timeout per managed published application. Note that the default behavior for a session reaching its idle threshold is the execution of a disconnect event however an idle session may also be immediately logged off when the threshold is reached. Optional warning messages for sessions nearing their idle threshold may also be specified on a per published app basis (*special thanks to longtime Citrite Lee Milam for this feature suggestion!*).

## Operation

Published app timeout settings are stored in the registry at HKLM\Software\Settings\Xirtica Software\AppIdle. By default the service refreshes its list of managed applications from the registry every five minutes. If an immediate update is required after configuration changes have been committed it is recommended that the service be manually restarted.

## Session Sharing

It is important to note that the service performs its operations at the session level. A managed published app's timeout(s) are triggered against the session regardless of any other applications sharing the session.